

POLISI MYNEDIAD NOFIO I BLANT O DAN 8 OED

SWIMMING ENTRY POLICY FOR CHILDREN UNDER 8 YEARS

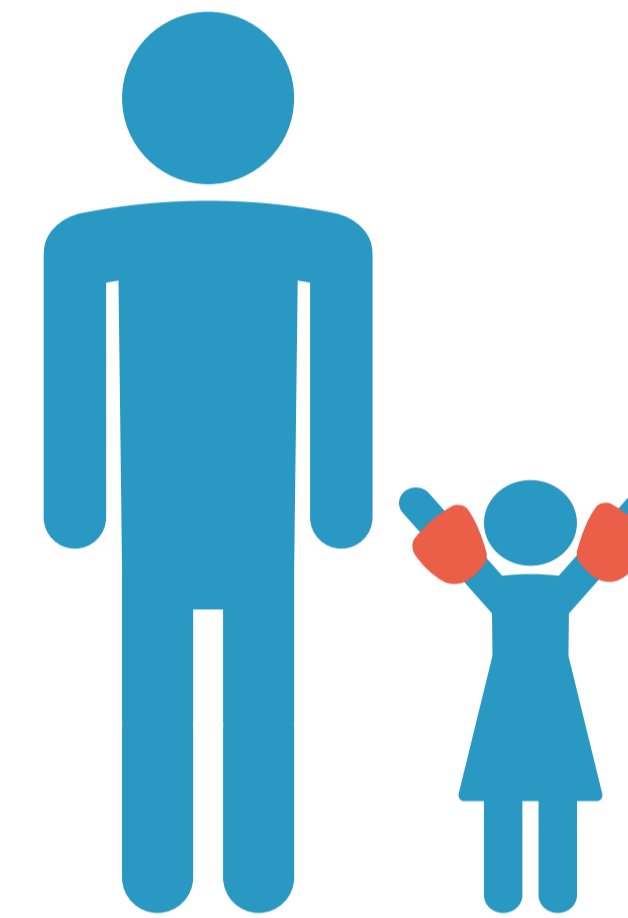
Byw'n Iach Dwyfor, Pwllheli



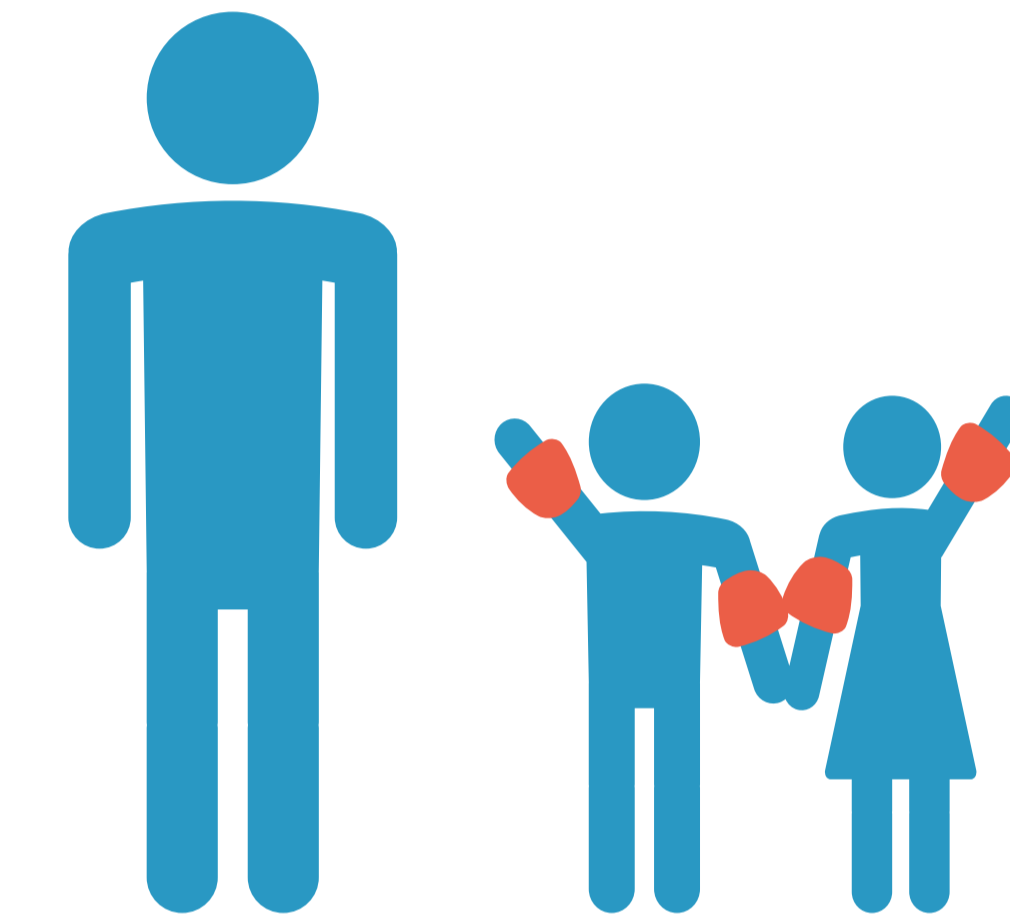
Byw'n Iach

Pwll Mawr (Ochr Bas) . Main Pool (Shallow End)

Oedolyn 16+ a Plentyn o dan 5 oed
Adult 16+ and Child under 5 yrs

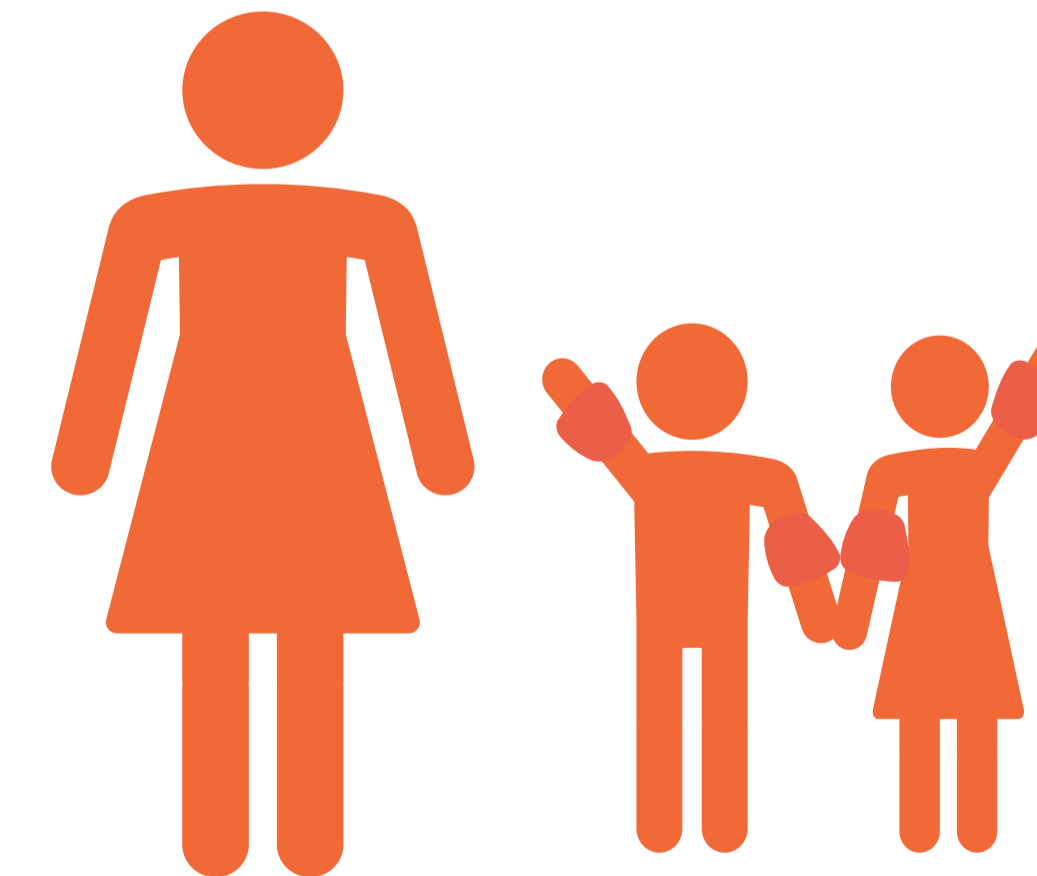


Oedolyn 16+ a hyd at 2 o blant rhwng 5-7 oed
Adult 16+ and up to 2 children 5-7 yrs



Pwll Bach Small Pool

Oedolyn 16+ a hyd at 2 o blant o dan 8 oed
Adult 16+ and up to 2 children under 8 yrs



- Er budd diogelwch defnyddwyr y pwll, bydd achubwr bywyd yn defnyddio eu disgrisiwn i arwain nofwyr i mewn i ardaloedd diogel yn unol â'u gallu.
- Mae plant o dan 8 yn cael eu cyfyngu i ardaloedd diogel o'r pwll
- Rhaid i rieni fod gyda plant dan 8 bob amser rhaid iddynt beidio â gadael i'r plant eu pen eu hunain neu du hwnt i gyswllt llygaid.
- Gall person cyfrifol sy'n 16 oed neu'n hyn yn cynyddu'r gymhareb ar gyfer plant o dan 8 mlwydd oed o 2:1 i 4:1
- I gyflawni hyn, mae'n rhaid i'r ddau blentyn ychwanegol fod rhwng 5 ac 7 oed a rhaid iddo fod yn llwyddiannus yn y Wobr Cynllun Nofio Achrededig
- Am ragor o wybodaeth am y Cynllun Nofio Achrededig, cysylltwch â'r dderbynfa.
- In the interest of pool safety lifeguard will use their discretion to guide swimmers into safe areas in accordance with their ability.
- Children under 8 are restricted to certain safe areas of the pool
- Parents must accompany children under 8 at all times they must not leave the children unattended or beyond eye contact
- A responsible person who is 16 years or older can increase the admission ratio for under 8 years old from 2:1 to 4:1
- To achieve this, the two additional children must be between the age of 5 and 7 years and must be successful in the
- Accredited Swimming Scheme Award
- For more information about the Accredited Swim Scheme please contact the reception

Ffe all hyn newid yn ddiabynnol ar sesiynau arbennig neu asesiad risg.
This may vary during specific sessions or risk assessments.

www.bywniach.cymru

