

POLISI MYNEDIAD NOFIO I BLANT O DAN 8 OED

SWIMMING ENTRY POLICY FOR CHILDREN UNDER 8 YEARS

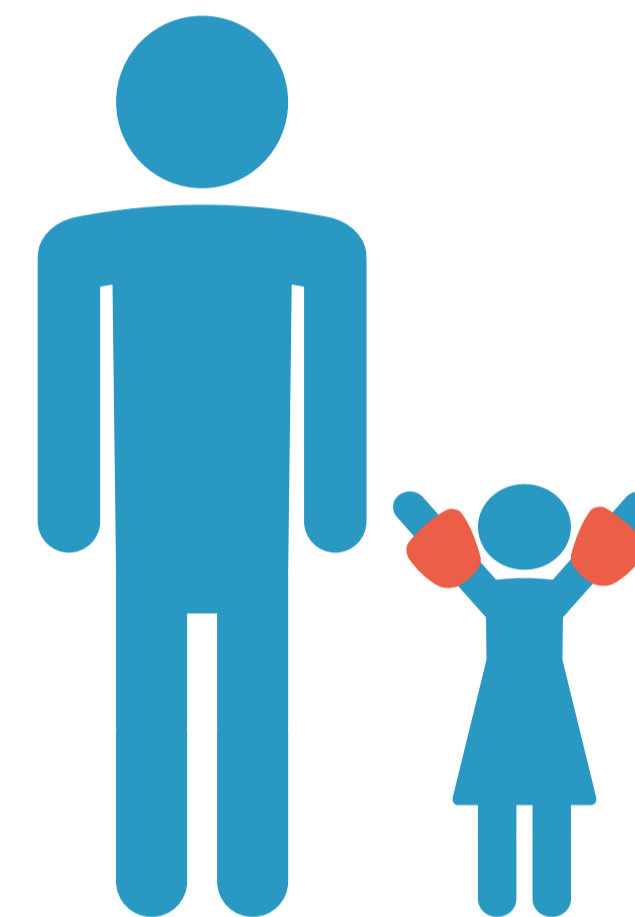
Byw'n Iach Bangor



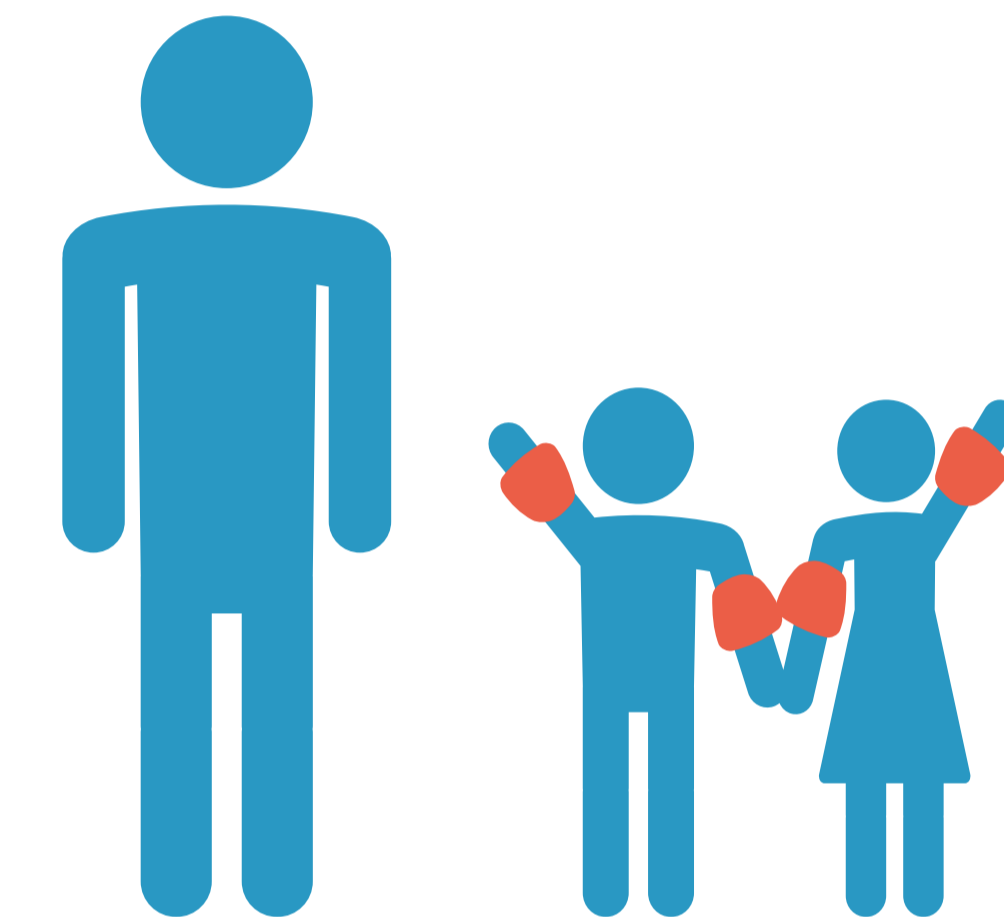
Byw'n Iach

Pwll Mawr (Ochr Bas) . Main Pool (Shallow End)

Oedolyn 16+ a Plentyn o dan 5 oed
Adult 16+ and Child under 5 yrs



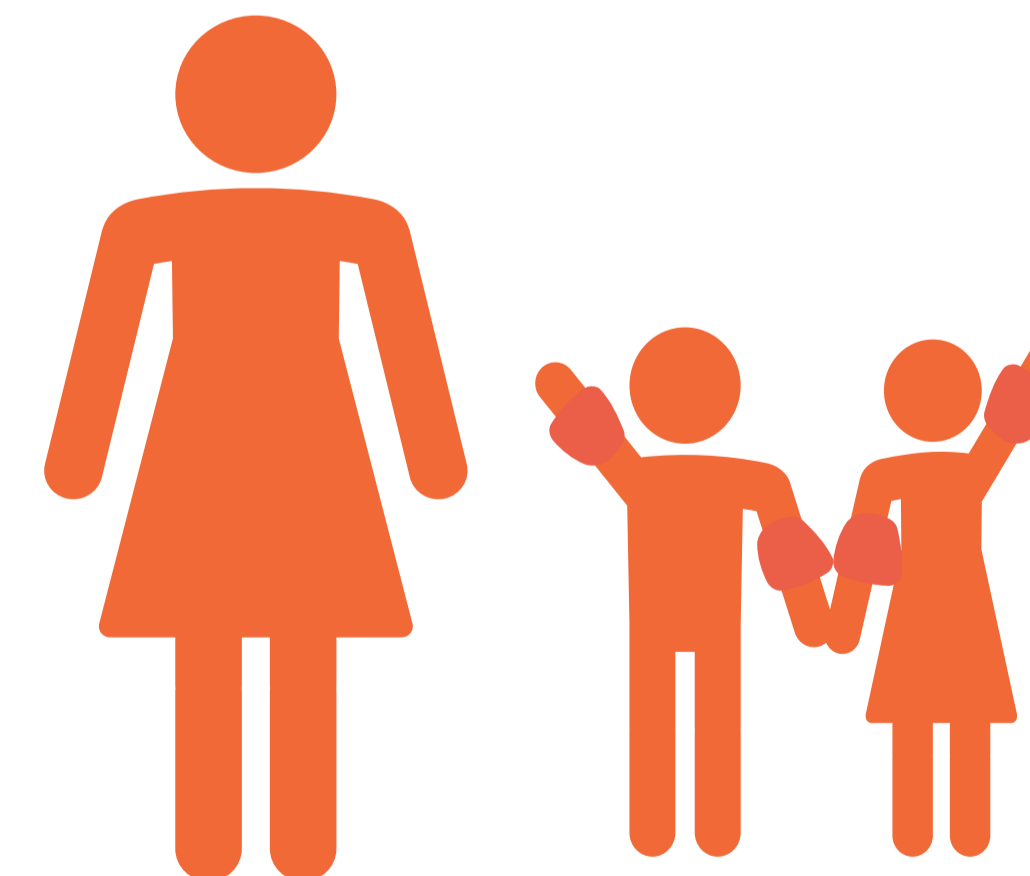
Oedolyn 16+ a hyd at 2 o blant rhwng 5-7 oed
Adult 16+ and up to 2 children 5-7 yrs



- Er budd diogelwch defnyddwyr y pwll, bydd achubwr bywyd yn defnyddio eu disgrisiwn i arwain nofwyr i mewn i ardaloedd diogel yn unol â'u gallu.
- Mae plant o dan 8 yn cael eu cyfyngu i ardaloedd diogel o'r pwll
- Rhaid i rieni fod gyda plant dan 8 bob amser rhaid iddynt beidio â gadael i'r plant eu pen eu hunain neu du hwnt i gyswllt llygaid.
- Gall person cyfrifol sy'n 16 oed neu'n hyn yn cynyddu'r gymhareb ar gyfer plant o dan 8 mlwydd oed o 2:1 i 4:1
- I gyflawni hyn, mae'n rhaid i'r ddau blentyn ychwanegol fod rhwng 5 ac 7 oed a rhaid iddo fod yn llwyddiannus yn y Wobr Cynllun Nofio Achrededig
- Am ragor o wybodaeth am y Cynllun Nofio Achrededig, cysylltwch â'r dderbynfa.
- In the interest of pool safety lifeguard will use their discretion to guide swimmers into safe areas in accordance with their ability.
- Children under 8 are restricted to certain safe areas of the pool
- Parents must accompany children under 8 at all times they must not leave the children unattended or beyond eye contact
- A responsible person who is 16 years or older can increase the admission ratio for under 8 years old from 2:1 to 4:1
- To achieve this, the two additional children must be between the age of 5 and 7 years and must be successful in the
- Accredited Swimming Scheme Award
- For more information about the Accredited Swim Scheme please contact the reception

Pwll Bach Small Pool

Oedolyn 16+ a hyd at 2 o blant o dan 8 oed
Adult 16+ and up to 2 children under 8 yrs



Ffe all hyn newid yn ddiabynnol ar sesiynau arbennig neu asesiad risg.
This may vary during specific sessions or risk assessments.

www.bywniach.cymru

